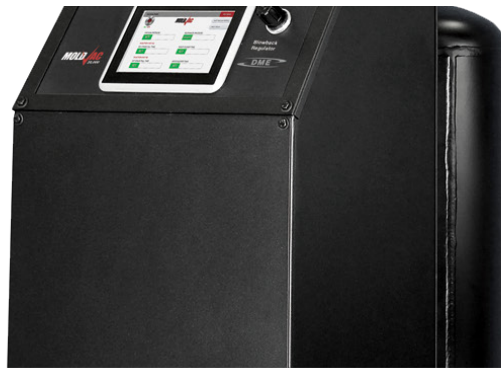




Series 10,000



Series 20,000



Series 40,000

MOLD-VAC

Vacuum & Blowback Controller



Mold-Vac Gas Purging Systems

Mold-Vac® is a standalone family of systems designed to eliminate molding problems caused as a result of gas and air entrapment. Exclusive to Mold-Vac design is our “blowback” control feature which cleans vented pins after every cycle. Mold-Vac provides precise LCD touch screen controls for vacuum and timing functions. Economically priced, all units are easy to install and operate.

Mold-Vac was developed to solve the common problem all molders experience, gas & air entrapment and plugged vents.

Offered in (3) sizes, all units are designed to draw up to 20” - 24” of vacuum with precision control.



WHY MOLD-VAC • **Improved Part Quality** - Eliminates part burns, blemishes, voids and short shots

- **Reduced Cycle Time** - Back pressure replaced by vacuum
- **Reduced Tool Downtime** - Volatiles removed by vacuum and blowback action

UNIT IN-DEPTH Vacuum Generation

- The MV10KDME unit requires the use of compressed air at 65psi and 33cfm to achieve 36 (in³/s) of vacuum. The 20K and 40K units use a servo driven motor to generate vacuum ratings of 900 and 1,665 (in³/s) respectively.

Blowback Function

- The two-phase blowback assists in part ejection (1st phase) and purges vented pins (2nd phase). Purging of the vent pins reduces mold maintenance and increases productivity.

Precise Control

- Custom precision microprocessor allows for precise control of vacuum and blowback functions. Vacuum control can be adjusted to 1/10th of a second, eliminating flash and improving part quality.

Portability

- The self-contained, compact design and quick disconnects allow the Mold-Vac to be easily moved from press to press.

Flexibility

- Mold-Vac is available in (3) sizes. Unit selection is based on 1st stage fill time, cavitation, and part volume(in³).



MOLD-VAC 40,000

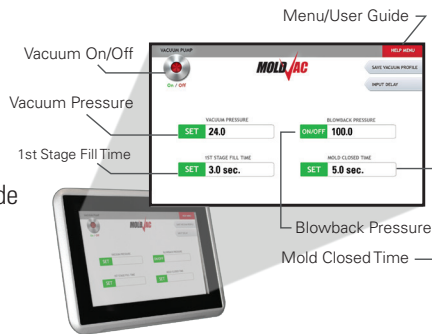
Gas Purging System

PART NUMBER

MV40KDME**

DESCRIPTION The newest and largest mold evacuation unit available. Faster and more powerful, the 40,000 is built specifically for larger parts or to handle the fastest molding cycles.

- ADVANTAGES**
- LCD Control Screen
 - Lock in and save mold settings
 - Password protected
 - Export mold profiles
 - Built in Help Menu & User Guide
 - Great for Stack Molds



MOLD-VAC 20,000

Gas Purging System

PART NUMBER

MV20KDME**

DESCRIPTION The 20,000 is our most popular unit size. The power and speed to handle the majority of applications.

- ADVANTAGES**
- LCD Control Screen
 - Lock in and save mold settings
 - Password protected
 - Export mold profiles
 - Built in Help Menu & User Guide



MOLD-VAC 10,000

Gas Purging System

PART NUMBER

MV10KDME*

DESCRIPTION Designed for smaller parts with slower fill speeds or less aggressive applications.

- ADVANTAGES**
- Easy to read control panel
 - Cost effective
 - Self-contained, compact design
 - Adjustable vacuum cycle time



* Add 110 to the end of the part number when ordering voltage.

** Add 220 or 480 to the end of the part number when ordering voltage.



Performance Characteristics	10,000 Series*	20,000 Series**	40,000 Series**
Vacuum Rating (in³/s)	36	900	1665
Vacuum Reservoir (in³)	74	2,700	5000
Vacuum Level (in of hg)¹	20-24	20-24	20-24

¹ Vacuum rating and levels are approximate based on mold design & construction

Physical Dimensions (US)			
Height	42"	42"	50"
Width	18"	18"	20"
Depth	24"	28"	34"
Weight	150 lbs.	180 lbs.	200 lbs.

Utility Requirements			
Voltage	110V/1/60	230/460/3/60	230/460/3/60
Amp Draw	2 Amps	4 Amps / 2 Amps	4 Amps / 2 Amps
Compressed Air Requirement	33 cfm @ 65psi	65 psi	65 psi
Air Inlet Size (in)	3/8" NPT	3/8" NPT	3/8" NPT
Pipe Connection (connect to mold)	3/4" NPT	3/4" NPT	3/4" NPT

* Add 110 to the end of the part number when ordering voltage.

** Add 220 or 480 to the end of the part number when ordering voltage.



Can DME provide the necessary tooling recommendations?

Yes, we can provide the necessary drawings illustrating the modifications required. Please submit a core/cavity plan and section views of the mold, a sample part and an explanation of the problem. Contact us today to find out more about the amazing Mold-Vac systems.

* Vacuum ratings and level are approximations based on mold design & construction.

World Headquarters
DME Company LLC
 29111 Stephenson Highway
 Madison Heights, MI 48071
 800-626-6653 toll-free tel
 248-398-6000 tel
 888-808-4363 toll-free fax
 www.dme.net
 dme@dme.net (e-mail)

DME of Canada LTD.
 A – 99 First Gulf BLVD
 Brampton , ON
 L6W 4T8
 905.677.6370
 905.677.5280
 800.387.6600 (Canada Only)
 dme_canada@dme.net

DME de México
 Circuito el Marqués Norte, No. 55
 Parque Industrial El Marqués
 El Marqués
 Querétaro
 CP 76246
 Mexico
 dme_mexico@dme.net (email)
 (442) 713 5666

