



**WATER MANIFOLDS
ALUMINUM AND BRASS**



ALUMINUM MANIFOLDS ALM-SERIES



Cooling with ease, DME's one piece aluminum extrusion manifolds allow for outlet ports on 5 flats for maximum water distribution. Painted Blue or Red coloring makes for easy visual identification of in or out of the mold, pre-drilled mounting holes.

- One Piece Extruded Aluminum
- Available in Divided style
- Max Temps up to 180C/356F
- Max Pressure 16Bar/230Psi
- (End Plugs Sold Separately)



3/4" Inlet Aluminum Manifolds

Item Number Example:

ALM 4 BCD - N 4 N12 - 120 B

Number of holes on one surface

Surfaces that the holes exist on

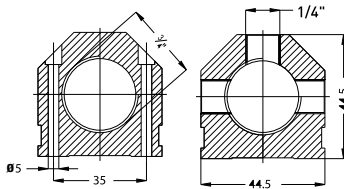
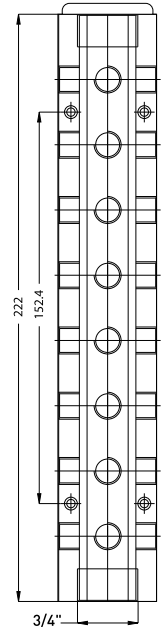
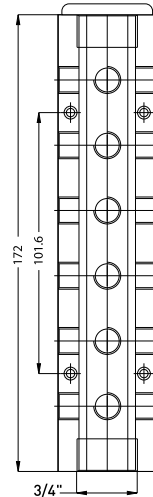
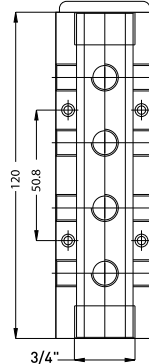
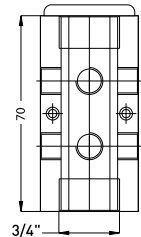
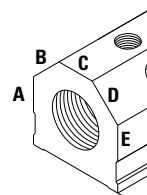
Outlet thread type NPT=N

Outlet thread size (1/8"=2) (1/4"=4)

Inlet (3/4"=N12)

Total mm length (70) (120) (172) (222)

Color: (Blue=B) (Red=R) (Combination=RB)



Uses end plug BWMIP12

1" Inlet Aluminum Manifolds

Item Number Example:

ALM 4 BCD - N 6 N16 - 172 B

Number of holes on one surface

Surfaces that the holes exist on

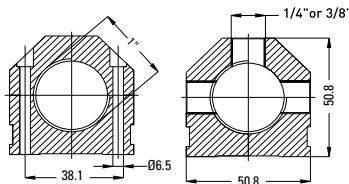
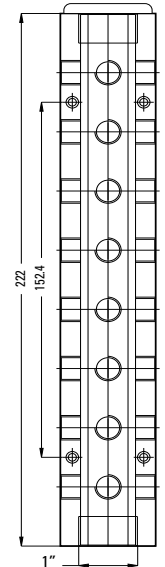
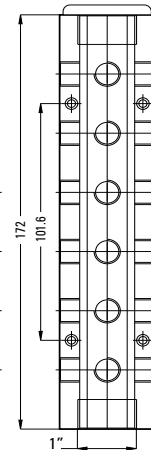
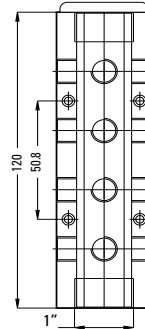
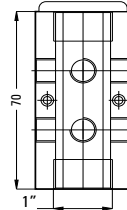
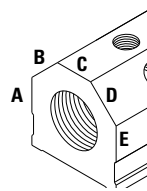
Outlet thread type NPT=N

Outlet thread size (1/4"=4) (3/8"=6)

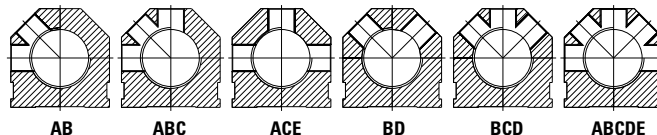
Inlet (1"=N16)

Total mm length (70) (120) (172) (222)

Color: (Blue=B) (Red=R) (Combination=RB)



Uses end plug BWMIP16



ALUMINUM MANIFOLDS ALM-SERIES



1-1/2" Inlet Aluminum Manifolds

Item Number Example:

ALM 4 BCD - N 6 N24 - 172 B

Number of holes on one surface

Surfaces that the holes exist on

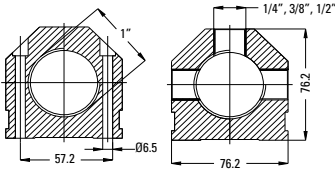
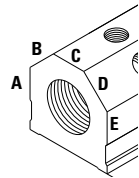
Outlet thread type NPT=N

Outlet thread size (1/4"=4) (3/8"=6) (1/2"=8)

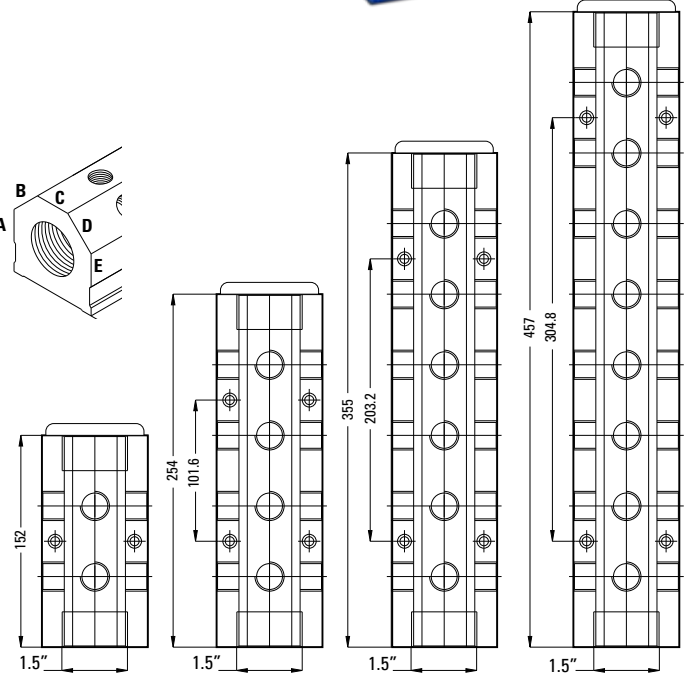
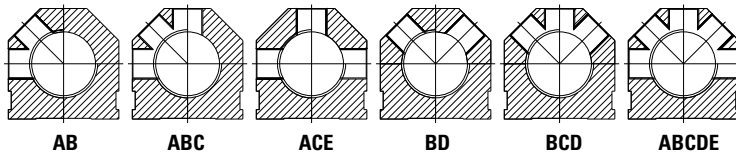
Inlet (1-1/2"=N24)

Total mm length (152) (254) (355) (457)

Color: (Blue=B) (Red=R) (Combination=RB)

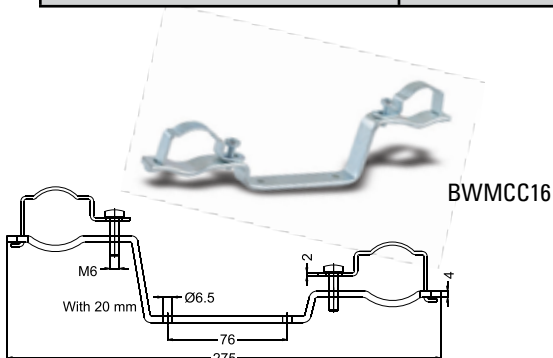
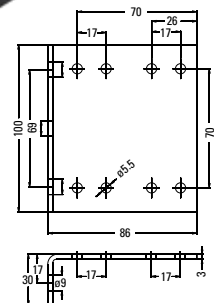


Uses end plug BWMIP2



ALUMINUM & BRASS MANIFOLD ACCESSORIES

ITEM NUMBER	DESCRIPTION
BWMIP12	3/4" In-let Plug
BWMIP16	1" In-let Plug
BWMIP20	1-1/4" In-let Plug
BWMIP24	1-1/2" In-let Plug
BWMCC16	Manifold Bracket
BWMB570	Mounting Plate



BWMB570

BRASS MANIFOLDS BWM-SERIES



Brass is a great alternative to aluminum manifolds.

Aluminum is known to erode when introduced to acidic water and harsh water. Brass manifolds are also unaffected by galvanic corrosion caused by aluminum manifolds combined with brass fittings. Overtime this erosion can lead to leaks of the threaded in/outlets.

- Multiple inlet and outlet combinations
- Max Temps up to 180C/356F
- Max Pressure 16Bar/230Psi
- (End Plugs Sold Separately)



Painted Red or Blue for easy identification.

No. of OUTLETS	ØT1 INLET	ITEM NUMBER		ØT OUTLET	L O.A.L.	C
		RED	BLUE			
4	3/4" (uses BWMIP12 End plug)	BWM4412R	BWM4412B	1/4"	150	30
6		BWM6412R	BWM6412B		210	
8		BWM8412R	BWM8412B		270	
10		BWM10412R	BWM10412B		300	
12		BWM12412R	BWM12412B		330	
4	3/4" (uses BWMIP12 End plug)	BWM4612R	BWM4612B	3/8"	165	35
6		BWM6612R	BWM6612B		200	
8		BWM8612R	BWM8612B		305	
10		BWM10612R	BWM10612B		375	
12		BWM12612R	BWM12612B		445	
4	1" (uses BWMIP16 End plug)	BWM4616R	BWM4616B	3/8"	165	35
6		BWM6616R	BWM6616B		235	
8		BWM8616R	BWM8616B		305	
10		BWM10616R	BWM10616B		375	
12		BWM12616R	BWM12616B		445	
4	1" (uses BWMIP16 End plug)	BWM4816R	BWM4816B	1/2"	210	50
6		BWM6816R	BWM6816B		310	
8		BWM8816R	BWM8816B		410	
10		BWM10816R	BWM10816B		510	
12		BWM12816R	BWM12816B		610	
4	1-1/4" (uses BWMIP20 End plug)	BWM4620R	BWM4620B	3/8"	196	40
6		BWM6620R	BWM6620B		276	
8		BWM8620R	BWM8620B		356	
10		BWM10620R	BWM10620B		436	
12		BWM12620R	BWM12620B		516	
16		BWM16620R	BWM16620B		676	
4	1-1/4" (uses BWMIP20 End plug)	BWM4820R	BWM4820B	1/2"	226	50
6		BWM6820R	BWM6820B		426	
8		BWM8820R	BWM8820B		526	
10		BWM10820R	BWM10820B		626	
12		BWM12820R	BWM12820B		826	

