



**FROM PELLET TO PART**  
YOUR PARTNER  
FOR PRODUCTIVITY  
AND SUSTAINABILITY



# STEEL BUSHINGS WITH SOLID BRONZE INSERTS

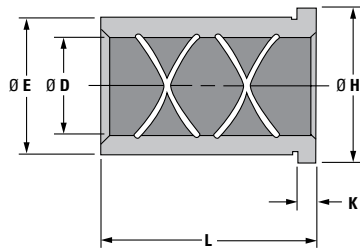
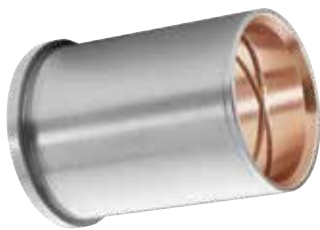
FOR SMOOTH, NON-GALLING OPERATION.

## Steel Shoulder Bushings with Solid Bronze Inserts – LBBI Precision Ground

DME Standard Shoulder and Straight Bushings feature internal oil grooves, are made from 40 Cr steel with solid bronze inserts for smooth, non-galling operation. Steel outer case provides a ridge matting surface in the plate that will not deform like solid brass/bronze bushings during installation. The bronze inserts are much thicker than the plated bronze over steel bushings promoting more cycles between maintenance.

Die Cast version with steel heat treated to a hardness of 45-58HRC for better durability.

### General Dimensions



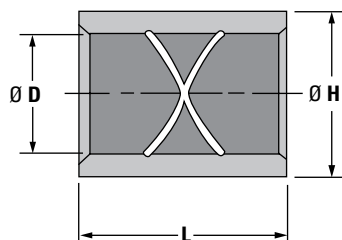
NOMINAL I.D.	Ø E <sup>+0.005</sup> / <sub>-0.000</sub>	Ø H <sup>+0.000</sup> / <sub>-0.005</sub>	K <sup>+0.000</sup> / <sub>-0.005</sub>
¾"	1.1255	1.302	.187
7/8"	1.2505	1.427	
1"	1.3755	1.552	
1¼"	1.6255	1.802	
1½"	2.0005	2.177	
2"	2.5005	2.677	
2½"	3.2505	3.427	.500
3"	3.7505	3.990	

L <sup>+0.000</sup> / <sub>-0.060</sub> LENGTH	Ø D = ¾" I.D.	Ø D = 7/8" I.D.	Ø D = 1" I.D.	Ø D = 1¼" I.D.	Ø D = 1½" I.D.	Ø D = 2" I.D.	Ø D = 2½" I.D.	Ø D = 3" I.D.
	.7505 <sup>+0.0005</sup> / <sub>-0.0000</sub>	.8755 <sup>+0.0005</sup> / <sub>-0.0000</sub>	1.0005 <sup>+0.0005</sup> / <sub>-0.0000</sub>	1.2505 <sup>+0.0005</sup> / <sub>-0.0000</sub>	1.5005 <sup>+0.0005</sup> / <sub>-0.0000</sub>	2.0005 <sup>+0.0005</sup> / <sub>-0.0000</sub>	2.5005 <sup>+0.0005</sup> / <sub>-0.0000</sub>	3.0005 <sup>+0.0005</sup> / <sub>-0.0000</sub>
	ITEM NUMBER	ITEM NUMBER	ITEM NUMBER	ITEM NUMBER	ITEM NUMBER	ITEM NUMBER	ITEM NUMBER	ITEM NUMBER
¾"	LBBI0607	LBBI0707	LBBI0807	LBBI1007	LBBI1207	—	—	—
1"	LBBI0613	LBBI0713	LBBI0813	LBBI1013	LBBI1213	LBBI1613	LBBI2013	—
1¼"	LBBI0617	LBBI0717	LBBI0817	LBBI1017	LBBI1217	LBBI1617	LBBI2017	—
2"	LBBI0623	LBBI0723	LBBI0823	LBBI1023	LBBI1223	LBBI1623	LBBI2023	—
2½"	LBBI0627	LBBI0727	LBBI0827	LBBI1027	LBBI1227	LBBI1627	LBBI2027	—
3"	LBBI0633	LBBI0733	LBBI0833	LBBI1033	LBBI1233	LBBI1633	LBBI2033	—
3½"	LBBI0637	LBBI0737	LBBI0837	LBBI1037	LBBI1237	LBBI1637	LBBI2037	LBBI2437
4"	LBBI0643	LBBI0743	LBBI0843	LBBI1043	LBBI1243	LBBI1643	LBBI2043	—
4½"	LBBI0647	LBBI0747	LBBI0847	LBBI1047	LBBI1247	LBBI1647	LBBI2047	LBBI2447
5"	LBBI0657	LBBI0757	LBBI0857	LBBI1057	LBBI1257	LBBI1657	LBBI2057	LBBI2457
7"	—	—	—	—	—	—	—	LBBI2477

NOTE: Add letters DC to the end of the Item Number for the Die Cast Version. Example: LBBI0607DC or STBBI0607DC

## Steel Straight Bushings with Solid Bronze Inserts – STBBI Precision Ground

Precision Ground



NOMINAL I.D.	Ø D <sup>+0.0005</sup> / <sub>-0.0000</sub>	L <sup>+0.000</sup> / <sub>-0.060</sub> LENGTH	Ø H <sup>+0.0005</sup> / <sub>-0.0000</sub>	ITEM NUMBER
¾"	.7505	¾"	1.1255	STBBI0607
		1"	1.1255	STBBI0613
7/8"	.8755	1"	1.2505	STBBI0713
		1¼"	1.3755	STBBI0813
1"	1.0005	1"	1.3755	STBBI1013
		1¼"	1.6255	STBBI1017
1¼"	1.2505	1"	1.6255	STBBI1213
		1½"	2.0005	STBBI1217
1½"	1.5005	1"	2.0005	STBBI1637
		2"	2.5005	STBBI2047
2"	2.0005	3"	3.2505	STBBI2447
		3"	3.7505	STBBI2447



FROM PELLET TO PART  
YOUR PARTNER  
FOR PRODUCTIVITY  
AND SUSTAINABILITY



## STEEL BUSHINGS WITH SOLID BRONZE INSERTS

FOR SMOOTH, NON-GALLING OPERATION.

### Steel Guided Ejection Bushings with Solid Bronze Inserts – GEBI

The Steel Guided Ejection Bushing with Bronze Inserts are made from robust 40 Cr steel with a high strength solid bronze insert for non-scoring lubricity of bronze plating. Internal oil grooves and a lubrication hole help to ensure smooth operation. Steel outer case provides a ridge matting surface in the plate that will not deform like solid brass/bronze bushings during installation. The bronze inserts are much thicker than the plated bronze over steel bushings promoting more cycles between maintenance.

It is recommended that a minimum of four bushings be installed. The size of the bushings should be determined by the size of the mold. The Guided Ejection System is inexpensive protection against wear and possible costly damage to a mold in production.

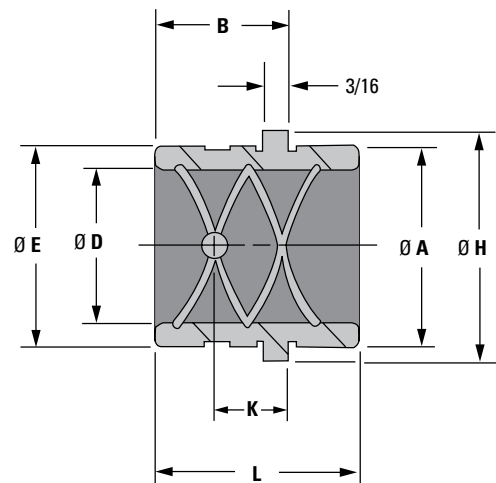
Die Cast version with steel heat treated to a hardness of 45-58HRC for better durability.

- Holds the ejector assembly in alignment
- Supports the weight of the ejector assembly throughout the entire cycle
- Reduces wear on ejection components
- Prevents cocking of the ejector plates
- Heat treated to a hardness of 45-58 HRC for better durability



NOMINAL I.D.	Ø D +.0005 -.0000	Ø E +.0005 -.0000	Ø A +.000 -.001	Ø H +.000 -.010	L +.00 -.03	B	K	ITEM NUMBER
¾"	.751	1.1255	1.1240	1.302	1.50	1.00	.56	GEBI750
7/8"	.876	1.2505	1.2490	1.427	1.50	1.00	.56	GEBI875
1"	1.001	1.3755	1.3740	1.552	1.75	1.12	.62	GEBI100
1¼"	1.251	1.6255	1.6240	1.802	1.75	1.12	.62	GEBI125
1½"	1.501	2.0005	1.9990	2.177	1.75	1.12	.62	GEBI150

NOTE: Add letters DC to the end of the Item Number for the Die Cast Version.  
Example: GEBI750DC



NOTE: Select corresponding guide pin in proper diameter and length for application.



eSTORE  
store.dme.net