

DME COOLED SPRUE BUSHING



Opening up a wide range of possibilities for the processing of resins in the injection process the new DME Conformal Cooled Bushing allows the use of a larger sprue diameter helping to reduce the pressure required to fill your part. The benefits to molding operations are significant and include:

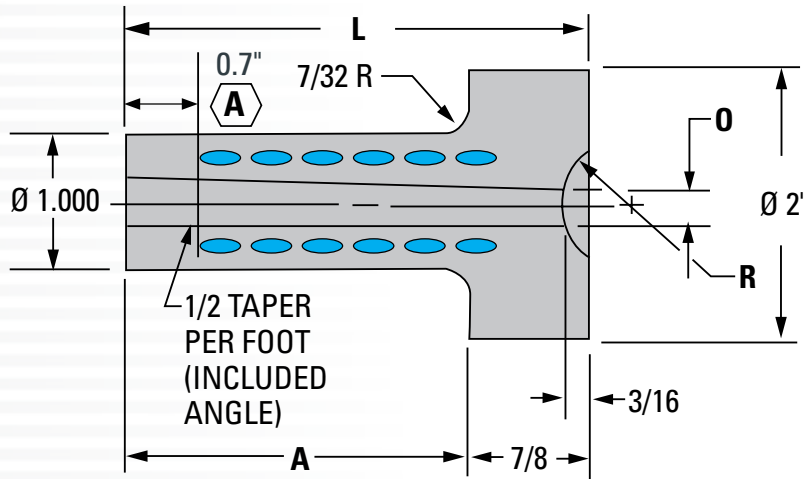
- Ability to operate on a smaller, more economical press.
- Faster output
- Lower scrap
- Consistent quality



DME's Conformal Sprue Bushing, deliver substantial returns with minimal investment.

"B-TRU" Series

"B" SERIES



Available with $O \frac{5}{32}, \frac{7}{32}, \frac{9}{32}$ or $\frac{11}{32}$ $R \frac{1}{2}$ or $\frac{3}{4}$

| ITEM NUMBER PREFIX | A | L |
|--------------------|------------------|------------------|
| B00__ TRUP | $\frac{29}{32}$ | $1\frac{25}{32}$ |
| B01__ TRUP | $1\frac{13}{32}$ | $2\frac{9}{32}$ |
| B02__ TRUP | $1\frac{29}{32}$ | $2\frac{25}{32}$ |
| B03__ TRUP | $2\frac{13}{32}$ | $3\frac{9}{32}$ |
| B04__ TRUP | $2\frac{29}{32}$ | $3\frac{25}{32}$ |
| B05__ TRUP | $3\frac{13}{32}$ | $4\frac{9}{32}$ |
| B06__ TRUP | $3\frac{29}{32}$ | $4\frac{25}{32}$ |
| B07__ TRUP | $4\frac{13}{32}$ | $5\frac{9}{32}$ |
| B08__ TRUP | $4\frac{29}{32}$ | $5\frac{25}{32}$ |
| B10__ TRUP* | $5\frac{29}{32}$ | $6\frac{25}{32}$ |

Some sizes maybe subject to lead time and/or limited in "O" diameter.

* 10 Orphis is limited to sizes 5/32 and 7/32.

Please contact your DME representative for details.



- B01-B10 limited to 0.5" (12.7 mm) alteration. This includes overall length adjustment and runner depth.
- B00 limited to 0.3" (7.62 mm) alteration. This includes overall length adjustment and runner depth.

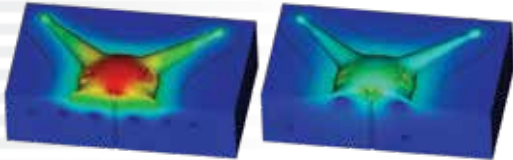


**DME Complete
Thermal
Management**

MORE PARTS - BETTER QUALITY:

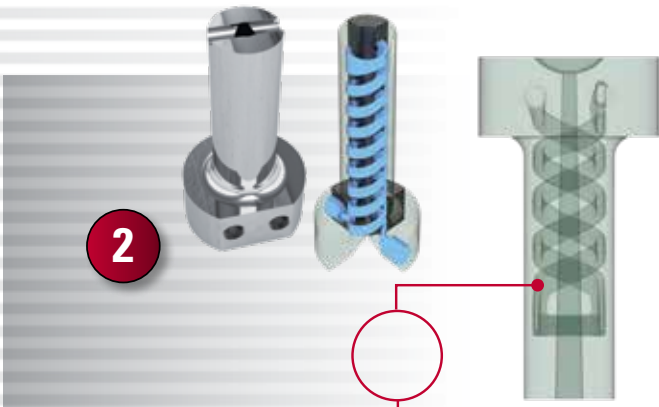
BY INCORPORATING DME CONFORMAL COOLED COMPONENTS

1



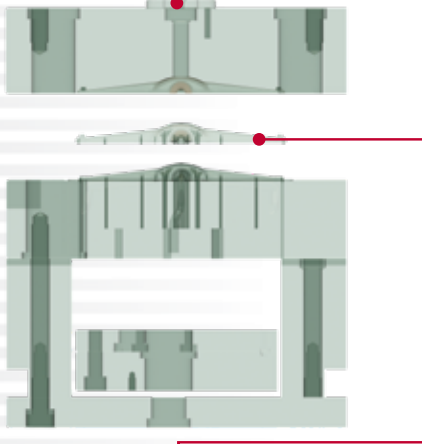
Utilize the experts at DME for **Design and/or MOLD FLOW ANALYSIS** to verify and alleviate hot spots.

2



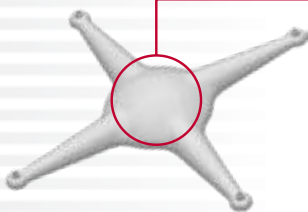
Determine the need for **STANDARDIZED OR CUSTOM DESIGNED** Conformal Cooled Components for best results.

3



Install DME Component, **ACHIEVE OPTIMUM RESULTS.**

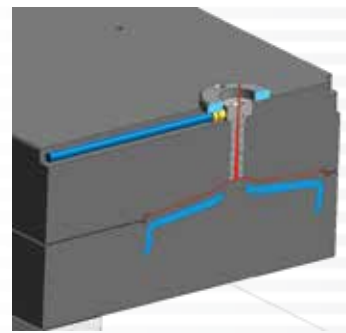
4



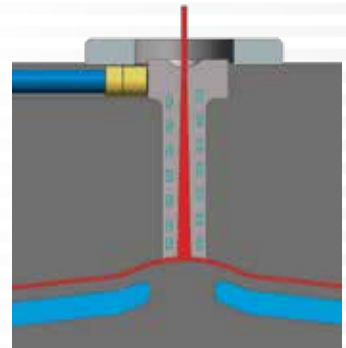
Boost output and part quality.

INDUSTRY STANDARD CONFORMAL COOLED COMPONENTS

OPTIMIZE YOUR PRESS WITH CONFORMAL SPRUE BUSHINGS



Interchangeable with our standard B-series with minimal tool modification.



Reduce cycle time, pressures and part stress with greater control of the sprue.

NOTE: Maximum Injection Pressure for Conformal Bushing is 26,000psi