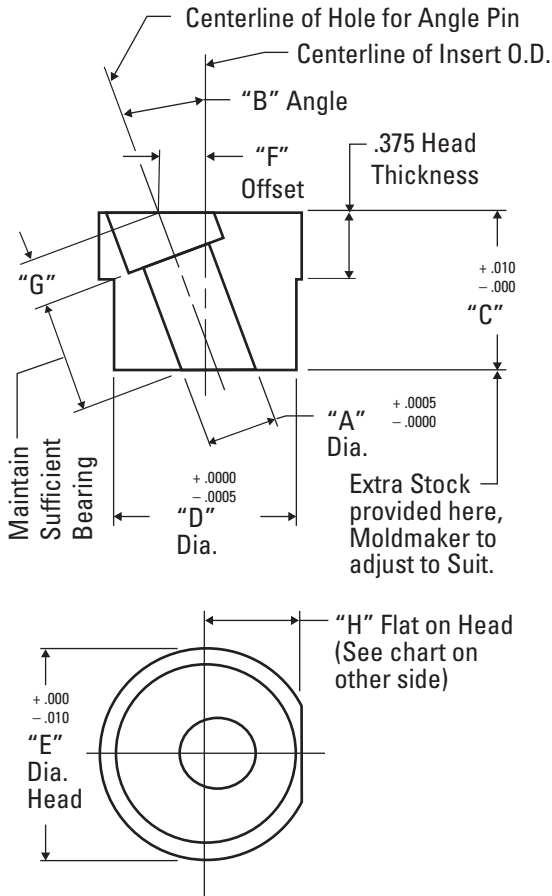


INSTALLATION DATA

FOR: INSERTS FOR ANGLE PINS
DESIGNED FOR USE WITH STANDARD DME ANGLE PINS
PLEASE READ CAREFULLY BEFORE INSTALLING COMPONENTS

BASIC DIMENSIONS ON, INSERTS FOR ANGLE PINS:



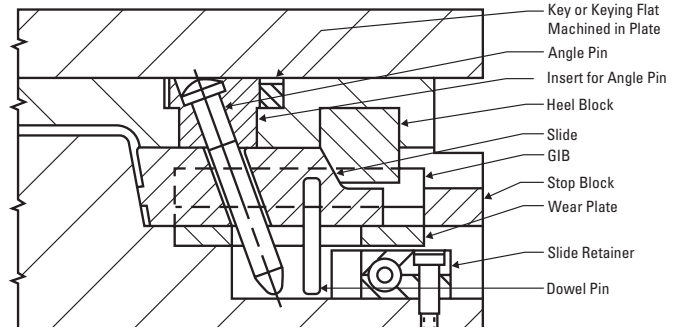
| CATALOG NUMBER | "A" DIA. HOLE | "B" ANGLE | "C" LENGTH | "D" DIAMETER | "E" DIA. HEAD | "F" OFFSET | "G" DEPTH | | |
|----------------|---------------|-----------|------------|--------------|---------------|------------|-----------|------|------|
| API-3101 | .3765 | 10° | .875 | .6250 | .812 | .062 | .256 | | |
| API-3102 | | | 1.375 | .7500 | .938 | .125 | | | |
| API-3103 | | | 1.875 | .7500 | .938 | .156 | | | |
| API-3151 | | 15° | 15° | .875 | .7500 | .938 | | .125 | .264 |
| API-3152 | | | | 1.375 | .8750 | 1.062 | | .188 | |
| API-3153 | | | | 1.875 | 1.0000 | 1.188 | | .250 | |
| API-3201 | | 20° | 20° | .875 | .8750 | 1.062 | | .156 | .275 |
| API-3202 | | | | 1.375 | 1.0000 | 1.188 | | .250 | |
| API-3203 | | | | 1.875 | 1.2500 | 1.438 | | .312 | |
| API-4101 | .5015 | 10° | .875 | .7500 | .938 | .094 | .258 | | |
| API-4102 | | | 1.375 | .8750 | 1.062 | .125 | | | |
| API-4103 | | | 1.875 | 1.0000 | 1.188 | .156 | | | |
| API-4151 | | 15° | 15° | .875 | .8750 | 1.062 | | .125 | .268 |
| API-4152 | | | | 1.375 | 1.0000 | 1.188 | | .188 | |
| API-4153 | | | | 1.875 | 1.1250 | 1.312 | | .250 | |
| API-4201 | | 20° | 20° | .875 | 1.0000 | 1.188 | | .156 | .283 |
| API-4202 | | | | 1.375 | 1.1250 | 1.312 | | .250 | |
| API-4203 | | | | 1.875 | 1.3750 | 1.562 | | .312 | |
| API-5101 | .6265 | 10° | .875 | .8750 | 1.062 | .062 | .260 | | |
| API-5102 | | | 1.375 | 1.0000 | 1.188 | .125 | | | |
| API-5103 | | | 1.875 | 1.1250 | 1.312 | .188 | | | |
| API-5104 | | 15° | 15° | 2.375 | 1.2500 | 1.438 | | .219 | .273 |
| API-5151 | | | | .875 | 1.0000 | 1.188 | | .125 | |
| API-5152 | | | | 1.375 | 1.1250 | 1.312 | | .188 | |
| API-5153 | | 20° | 20° | 1.875 | 1.2500 | 1.438 | | .250 | .291 |
| API-5154 | | | | 2.375 | 1.3750 | 1.562 | | .312 | |
| API-5201 | | | | .875 | 1.1250 | 1.312 | | .156 | |
| API-5202 | 20° | 20° | 1.375 | 1.2500 | 1.438 | .250 | .324 | | |
| API-5203 | | | 1.875 | 1.5000 | 1.688 | .344 | | | |
| API-5204 | | | 2.375 | 1.6250 | 1.812 | .438 | | | |
| API-6102 | .7515 | 10° | 1.375 | 1.1250 | 1.312 | .125 | .324 | | |
| API-6103 | | | 1.875 | 1.2500 | 1.438 | .156 | | | |
| API-6104 | | | 2.375 | 1.3750 | 1.562 | .188 | | | |
| API-6152 | | 15° | 15° | 1.375 | 1.2500 | 1.438 | | .188 | .339 |
| API-6153 | | | | 1.875 | 1.3750 | 1.562 | | .250 | |
| API-6154 | | | | 2.375 | 1.5000 | 1.688 | | .312 | |
| API-6202 | | 20° | 20° | 1.375 | 1.3750 | 1.562 | | .250 | .361 |
| API-6203 | | | | 1.875 | 1.6250 | 1.812 | | .364 | |
| API-6204 | | | | 2.375 | 1.7500 | 1.938 | | .438 | |
| API-8102 | 1.0015 | 10° | 1.375 | 1.3750 | 1.562 | .125 | .328 | | |
| API-8103 | | | 1.875 | 1.5000 | 1.688 | .188 | | | |
| API-8104 | | | 2.375 | 1.6250 | 1.812 | .219 | | | |
| API-8105 | | | 2.875 | 1.7500 | 1.938 | .250 | | | |
| API-8152 | | 15° | 15° | 1.375 | 1.5000 | 1.688 | .188 | .348 | |
| API-8153 | | | | 1.875 | 1.7500 | 1.938 | .250 | | |
| API-8154 | | | | 2.375 | 1.8750 | 2.062 | .312 | | |
| API-8155 | | 20° | 20° | 2.875 | 2.0000 | 2.188 | .375 | .377 | |
| API-8202 | | | | 1.375 | 1.7500 | 1.938 | .250 | | |
| API-8203 | 1.875 | | | 1.8750 | 2.062 | .344 | | | |
| API-8204 | 2.375 | | | 2.0000 | 2.188 | .438 | | | |
| API-8205 | | | 2.875 | 2.2500 | 2.438 | .531 | | | |

NOTES:

- DME STANDARD INSERTS FOR ANGLE PINS ARE DESIGNED FOR USE WITH STANDARD DME ANGLE PINS. THESE ANGLE PINS HAVE A SPHERICAL RADIUS ON THE TOP OF THE HEAD FOR INSTALLATION OF THE ANGLE PINS WITHOUT THE TYPICAL MACHINING REQUIRED TO THE HEAD.
- THESE PATENTED INSERTS ARE AVAILABLE WITH I. D. HOLES FOR EACH STANDARD SIZE DME ANGLE PIN. THE INSERTS ARE AVAILABLE WITH THE I. D. HOLES AT 10°, 15° AND 20° ANGLES IN VARIOUS LENGTHS.
- THESE INSERTS FOR ANGLE PINS MUST BE KEYED FOR PROPER ALIGNMENT AND TO PREVENT THE INSERTS FROM ROTATING. MOLDMAKER TO SUPPLY AND INSTALL KEY OR MACHINE KEYING FLAT IN PLATE TO SUIT.

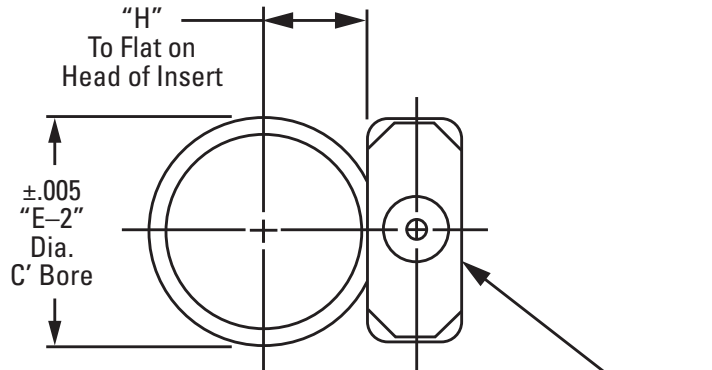
DME

TYPICAL APPLICATION FOR DME STANDARD INSERTS FOR ANGLE PINS: U.S. PATENT NUMBER 5,234,329

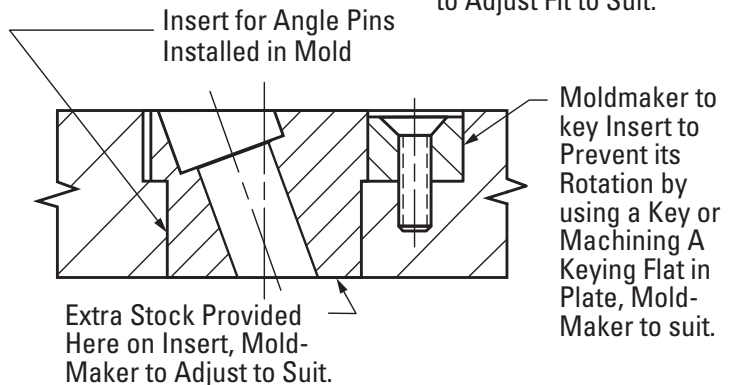
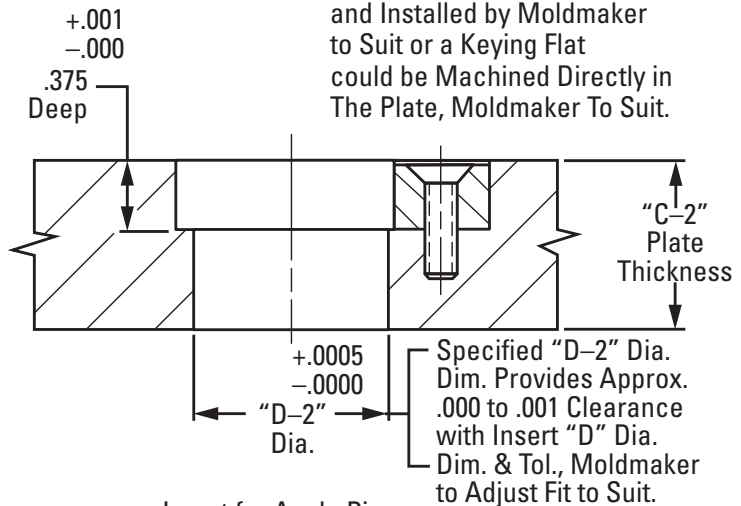


| CATALOG NUMBER | "C-2" PLT. THK. | "D-2" DIAMETER | "E-2" C'BORE | "H" HEAD FLAT |
|----------------|-----------------|----------------|--------------|---------------|
| API-3101 | .875 | .6250 | .875 | .332 |
| API-3102 | 1.375 | .7500 | 1.000 | .395 |
| API-3103 | 1.875 | .7500 | 1.000 | .395 |
| API-3151 | .875 | .7500 | 1.000 | .395 |
| API-3152 | 1.375 | .8750 | 1.125 | .457 |
| API-3153 | 1.875 | 1.0000 | 1.250 | .520 |
| API-3201 | .875 | .8750 | 1.125 | .457 |
| API-3202 | 1.375 | 1.0000 | 1.250 | .520 |
| API-3203 | 1.875 | 1.2500 | 1.500 | .650 |
| API-4101 | .875 | .7500 | 1.000 | .395 |
| API-4102 | 1.375 | .8750 | 1.125 | .457 |
| API-4103 | 1.875 | 1.0000 | 1.250 | .520 |
| API-4151 | .875 | .8750 | 1.125 | .457 |
| API-4152 | 1.375 | 1.0000 | 1.250 | .520 |
| API-4153 | 1.875 | 1.1250 | 1.375 | .582 |
| API-4201 | .875 | 1.0000 | 1.250 | .520 |
| API-4202 | 1.375 | 1.1250 | 1.375 | .582 |
| API-4203 | 1.875 | 1.3750 | 1.625 | .710 |
| API-5101 | .875 | .8750 | 1.125 | .457 |
| API-5102 | 1.375 | 1.0000 | 1.250 | .520 |
| API-5103 | 1.875 | 1.1250 | 1.375 | .582 |
| API-5104 | 2.375 | 1.2500 | 1.500 | .650 |
| API-5151 | .875 | 1.0000 | 1.250 | .520 |
| API-5152 | 1.375 | 1.1250 | 1.375 | .582 |
| API-5153 | 1.875 | 1.2500 | 1.500 | .650 |
| API-5154 | 2.375 | 1.3750 | 1.625 | .710 |
| API-5201 | .875 | 1.1250 | 1.375 | .582 |
| API-5202 | 1.375 | 1.2500 | 1.500 | .650 |
| API-5203 | 1.875 | 1.5000 | 1.750 | .770 |
| API-5204 | 2.375 | 1.6250 | 1.875 | .830 |
| API-6102 | 1.375 | 1.1250 | 1.375 | .582 |
| API-6103 | 1.875 | 1.2500 | 1.500 | .650 |
| API-6104 | 2.375 | 1.3750 | 1.625 | .710 |
| API-6152 | 1.375 | 1.2500 | 1.500 | .650 |
| API-6153 | 1.875 | 1.3750 | 1.625 | .710 |
| API-6154 | 2.375 | 1.5000 | 1.750 | .770 |
| API-6202 | 1.375 | 1.3750 | 1.625 | .710 |
| API-6203 | 1.875 | 1.6250 | 1.875 | .830 |
| API-6204 | 2.375 | 1.7500 | 2.000 | .890 |
| API-8102 | 1.375 | 1.3750 | 1.625 | .710 |
| API-8103 | 1.875 | 1.5000 | 1.750 | .770 |
| API-8104 | 2.375 | 1.6250 | 1.875 | .830 |
| API-8105 | 2.875 | 1.7500 | 2.000 | .890 |
| API-8152 | 1.375 | 1.5000 | 1.750 | .770 |
| API-8153 | 1.875 | 1.7500 | 2.000 | .890 |
| API-8154 | 2.375 | 1.8750 | 2.125 | .960 |
| API-8155 | 2.875 | 2.0000 | 2.250 | 1.020 |
| API-8202 | 1.375 | 1.7500 | 2.000 | .890 |
| API-8203 | 1.875 | 1.8750 | 2.125 | .960 |
| API-8204 | 2.375 | 2.0000 | 2.250 | 1.020 |
| API-8205 | 2.875 | 2.2500 | 2.500 | 1.145 |

BASIC MACHINING DIMENSIONS FOR INSTALLING STANDARD DME INSERTS FOR ANGLE PINS INTO A MOLD:



Moldmaker to key Insert to Prevent it from Rotating. Key and Optional Screw for Retaining Key to be Supplied and Installed by Moldmaker to Suit or a Keying Flat could be Machined Directly in The Plate, Moldmaker To Suit.



29111 STEPHENSON HIGHWAY
MADISON HEIGHTS, MICHIGAN
48071 U.S.A.
1-800-626-6653